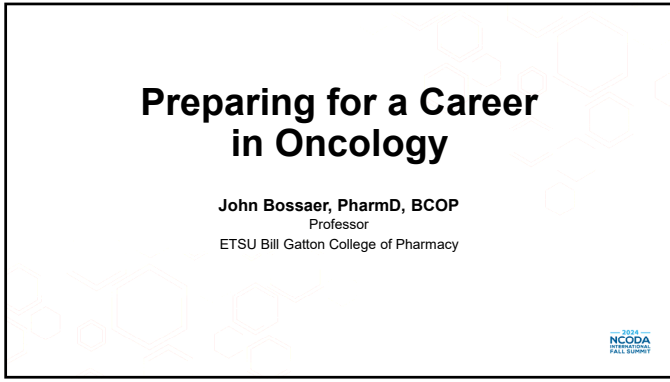
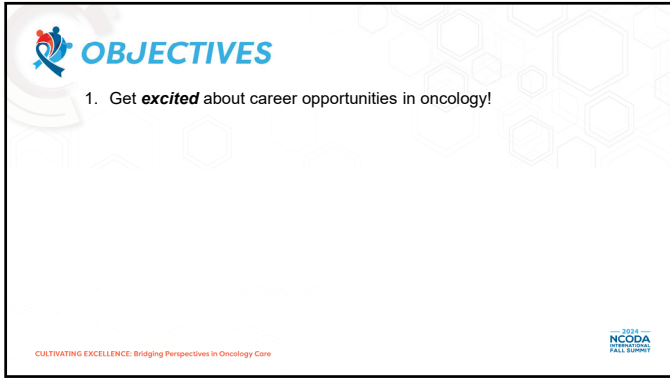





1



2




3



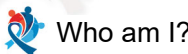
There are no relevant conflicts of interest to disclose for this presentation

Potentially relevant – *OncoPharm* podcast host/producer

CULTIVATING EXCELLENCE: Bridging Perspectives in Oncology Care



4



1. Hometown: Reynolds, IN

2. Currently reside in Johnson City, TN


3. Professor & Clinical Oncology Pharmacist

- Not Peds, Not BMT


4. Purdue University, PharmD (2007)

5. Medical University of South Carolina (MUSC)

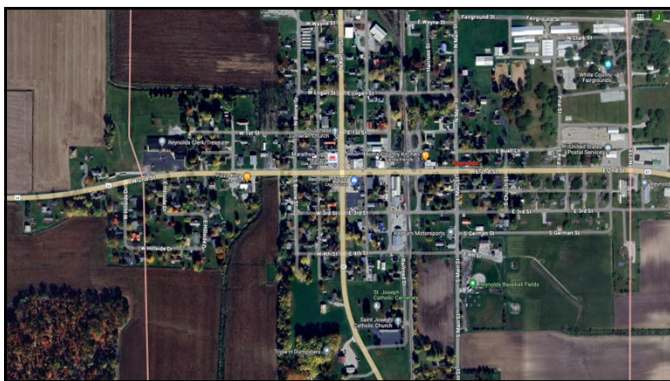
- PGY1 & PGY2 (Oncology)



CULTIVATING EXCELLENCE: Bridging Perspectives in Oncology Care



5



6



7

Why Oncology?

- It's personal
- Good job
- High highs
 - Curable diseases!
- Navigating the lows
 - Challenging, but rewarding
- The **COOLEST** drugs..... And the **most** drugs & therapy evolution

CULTIVATING EXCELLENCE: Bridging Perspectives in Oncology Care

8

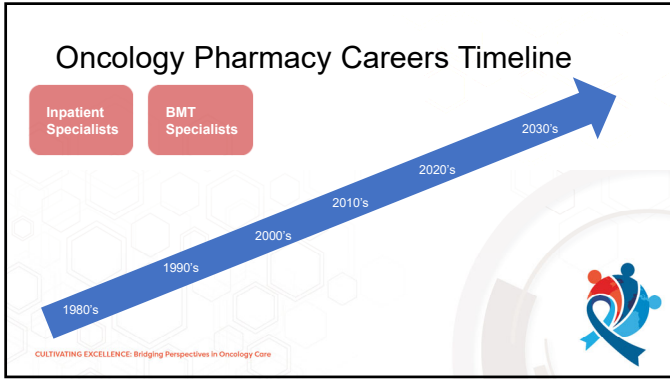
Oncology Pharmacy Careers Timeline

Inpatient Specialists

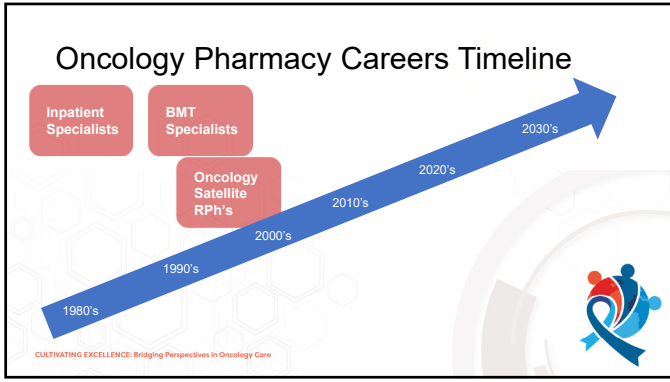
1980's 1990's 2000's 2010's 2020's 2030's

CULTIVATING EXCELLENCE: Bridging Perspectives in Oncology Care

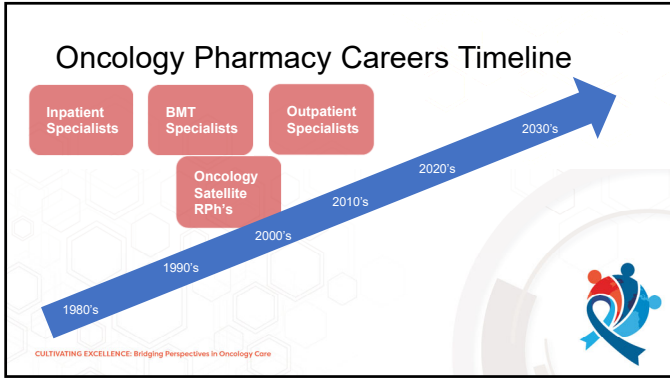
9



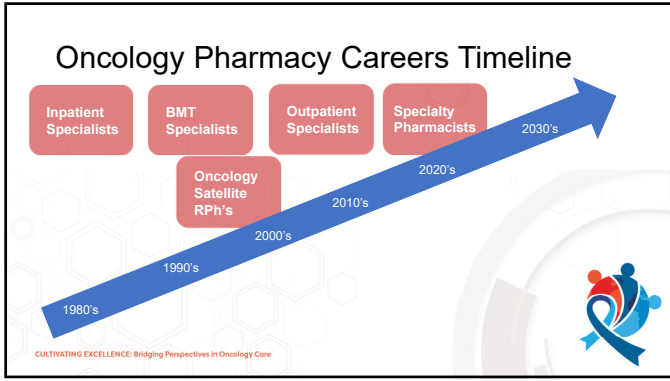
10



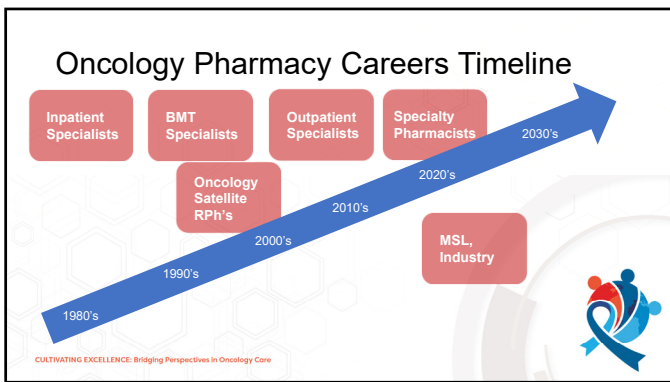
11



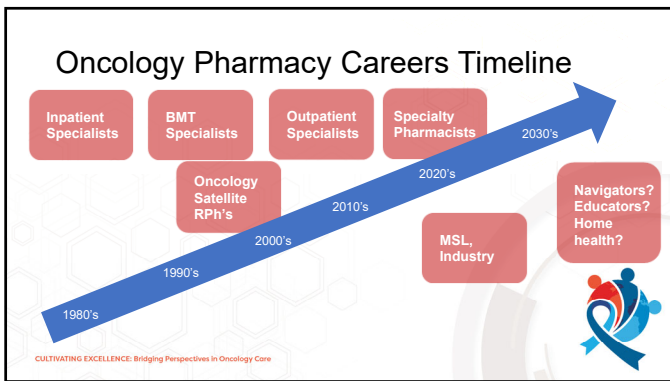
12



13




14



15

Current Job Oncology Pharmacist Openings

- Pharmacist – Hematology/Oncology Infusion Center
- Clinical Pharmacist – Oncology
- Clinical Pharmacy Specialist - Bone Marrow Transplant/Cellular Therapies
- Oncology Pharmacist Coordinator
- Clinical Pharmacist, Ambulatory Oncology
- Pharmacy Clinical Specialist – Inpatient Hematology/Oncology
- Clinical Pharmacist II – Cancer Center
- Clinical Pharmacist Ambulatory Malignant Hematology-Lymphoma
- Pharmacist – Clinical/Specialty Services




CULTIVATING EXCELLENCE: Bridging Perspectives In Oncology Care

16

Value of Oncology Pharmacists

- Financial impact
 - Ambulatory oncology clinical specialists (University Hospital)
 - \$111,111 estimated value of cost-avoidance and cost-saving only
 - Remote clinical oncology pharmacist impact (Private Practice)
 - 415% return on investment
- Clinical impact
 - Dosing, drug interactions, adherence, supportive care
 - Growing oncologist shortage → greater reliance on oncology pharmacists
- Administrative impact




CULTIVATING EXCELLENCE: Bridging Perspectives In Oncology Care

17

“Defense Travels”

- Communication skills
- Empathy
- Prioritization and time management skills
 - Getting 85% of 7 projects done in a month
 - Getting 100% on 1 project done in a month
- Anticipating future changes
 - Learning from the past
- Competence
 - Know what you know.
 - Know what you *don't* know.
- The Science
 - Pathophysiology
 - Pharmacology
 - Pharmacokinetics
 - Genetics
 - Laboratory science
- Must be able to handle the **hard** questions
 - “Right”, answer may not be known!



CULTIVATING EXCELLENCE: Bridging Perspectives In Oncology Care

18

Preparing for Your Career

Looks good to others

Is good for you

Presentations

CULTIVATING EXCELLENCE: Bridging Perspectives in Oncology Care

19

Preparing for Your Career

Looks good to others

Is good for you

Presentations

PSO

CULTIVATING EXCELLENCE: Bridging Perspectives in Oncology Care

20

Preparing for Your Career

Looks good to others

Is good for you

Research

Presentations

PSO

CULTIVATING EXCELLENCE: Bridging Perspectives in Oncology Care

21

Preparing for Your Career

Looks good to others (Blue circle)

Is good for you (Red circle)

Labels: Research, Presentations, PSO, Leading

CULTIVATING EXCELLENCE: Bridging Perspectives in Oncology Care

22

Preparing for Your Career

Looks good to others (Blue circle)

Is good for you (Red circle)

Labels: Research, Presentations, PSO, Leading, Work Experience

CULTIVATING EXCELLENCE: Bridging Perspectives in Oncology Care

23

Preparing for Your Career

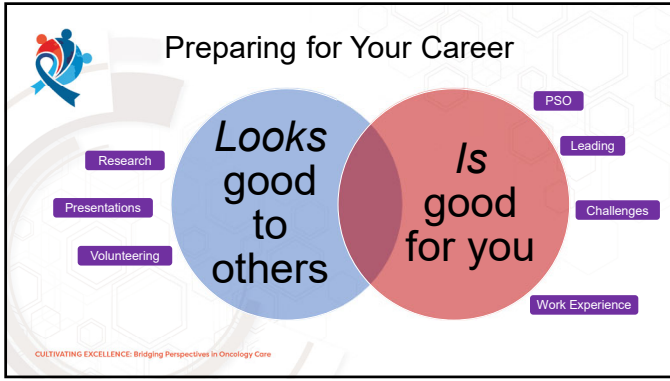
Looks good to others (Blue circle)

Is good for you (Red circle)

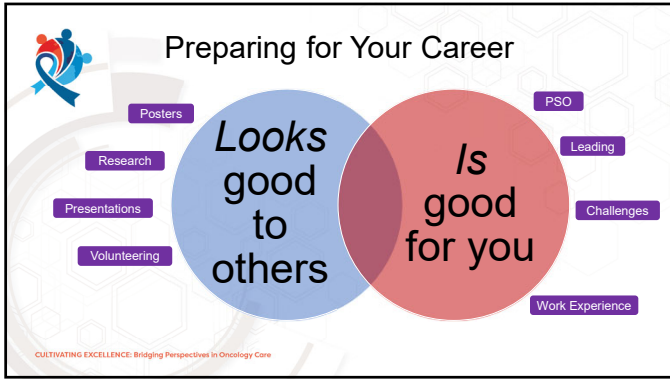
Labels: Research, Presentations, PSO, Leading, Challenges, Work Experience

CULTIVATING EXCELLENCE: Bridging Perspectives in Oncology Care

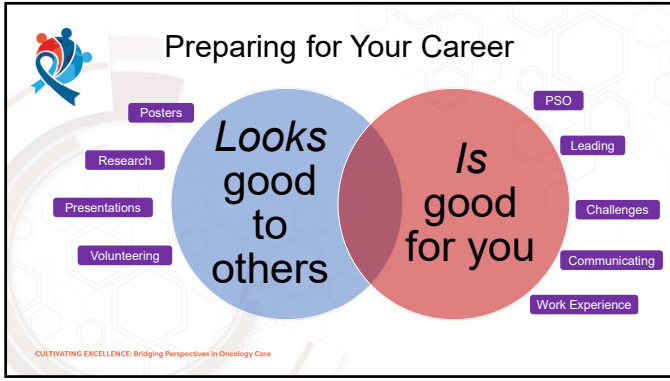
24



25



26



27



28

Cautionary Tale: The Great Migration

- Exodus of clinicians to non-patient care roles in recent years
- Attrition & retention survey
 - 102 of 528 (19%) respondents left clinical practice recently
 - Citing factors
 - Lack of support (i.e. high patient ratios)
 - Lack of recognition; not valued
 - Admin./project time
 - Lack of workplace flexibility

Handwritten note: JUST REMEMBER 5 YEARS AGO, YOU DREAMED ABOUT WHERE ARE YOU NOW

CULTIVATING EXCELLENCE: Bridging Perspectives in Oncology Care
Pat KV, et al. J Am Soc Clin Oncol. 2023;11(12):1225

29

What to look for in oncology pharmacy jobs?

- Your career is a marathon...**
- The obvious: pay, hours, benefits
- Fitness for the position
- Culture
 - Culture of toxicity?
 - Beware the "passion tax"
 - Culture of wellness?
- Support
 - Continuing education
 - Professional development

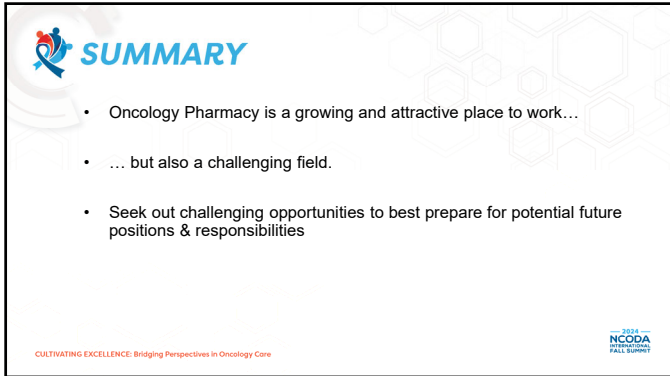
Some video game workers aim to unionize to push for better working conditions

WASH. POST, MAY 3, 2024 - 9:10 AM ET
 WASHINGTON POST
 By Daniel Hoyle, Heidi Wang
 4-Minute Listen

The pressure on video game workers has intensified. They work long hours, face mounting layoffs and the games they make are more complex. Some employees call it a "passion tax" that must be addressed.

CULTIVATING EXCELLENCE: Bridging Perspectives in Oncology Care

30



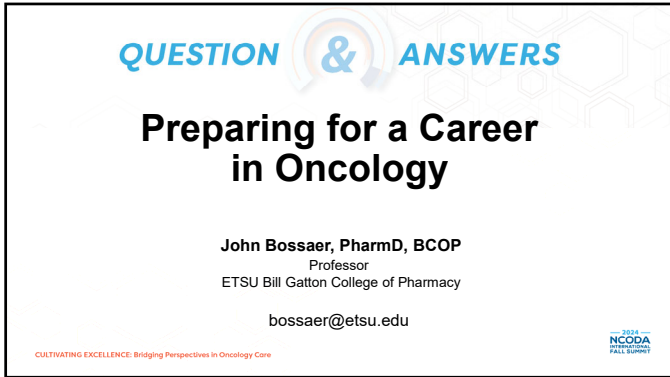
SUMMARY

- Oncology Pharmacy is a growing and attractive place to work...
- ... but also a challenging field.
- Seek out challenging opportunities to best prepare for potential future positions & responsibilities

CULTIVATING EXCELLENCE: Bridging Perspectives in Oncology Care

2024 NCODA INTERNATIONAL FALL SUMMIT

31



QUESTION & ANSWERS

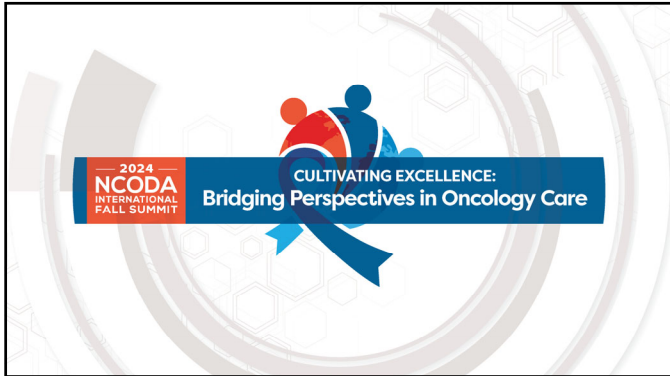
Preparing for a Career in Oncology

John Bossaer, PharmD, BCOP
 Professor
 ETSU Bill Gatton College of Pharmacy
 bossaer@etsu.edu

CULTIVATING EXCELLENCE: Bridging Perspectives in Oncology Care

2024 NCODA INTERNATIONAL FALL SUMMIT

32



2024 NCODA INTERNATIONAL FALL SUMMIT

CULTIVATING EXCELLENCE: Bridging Perspectives in Oncology Care

33
