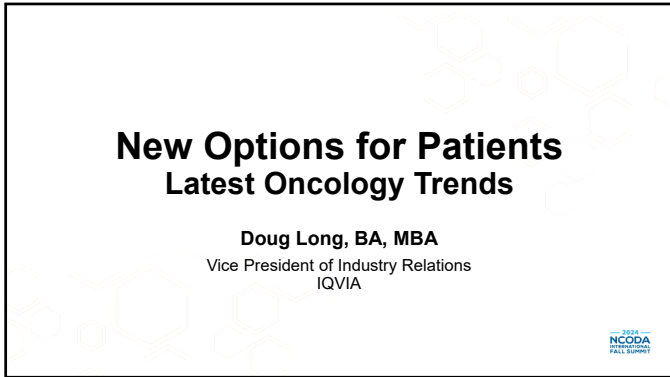
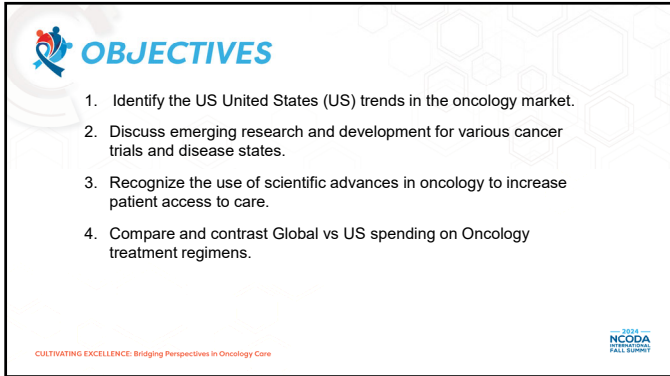




1



2



3

DISCLOSURE

The following relevant financial relationships from the past 24 months have been identified and disclosed for the following faculty of this CE activity:

- Doug Long, BA, MBA
 - Speaker: Apotex, Optisource, GSMM, AMCP, SAMPA, ARTIA

No relevant financial relationships from the past 24 months have been identified for the following reviewers of this CE activity:

- Taryn Newsome, CPhT
- Tahsin Imam, PharmD
- Daisy Doan, PharmD

CULTIVATING EXCELLENCE: Bridging Perspectives in Oncology Care

2024 NCODA INTERNATIONAL FALL SUMMIT

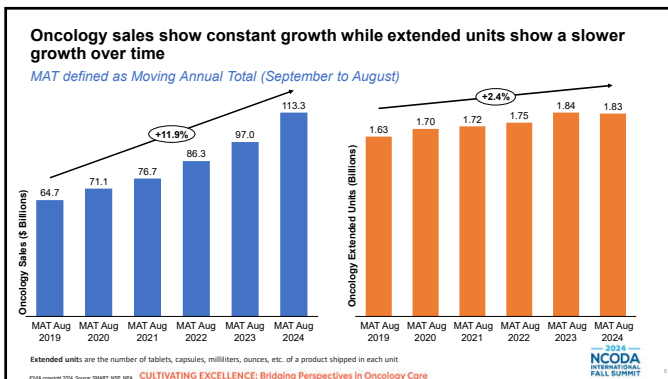
4

US Oncology Trends

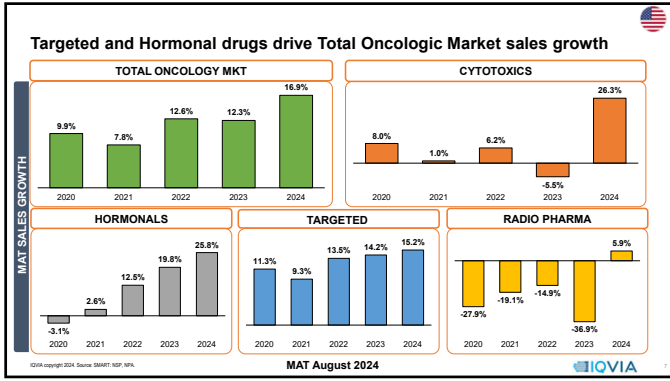
CULTIVATING EXCELLENCE: Bridging Perspectives in Oncology Care

2024 NCODA INTERNATIONAL FALL SUMMIT

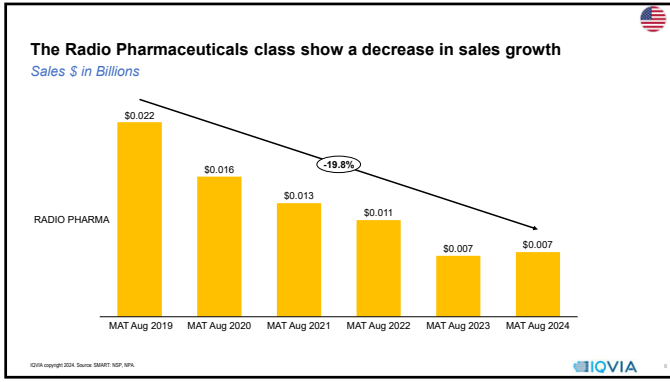
5



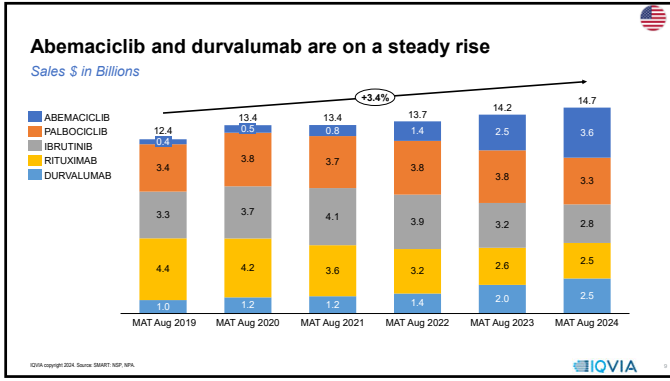
6



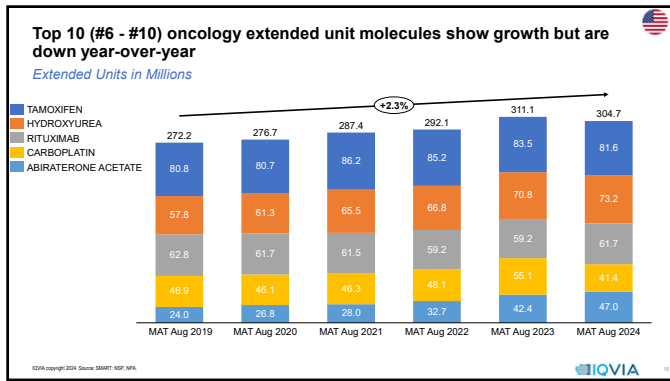
7



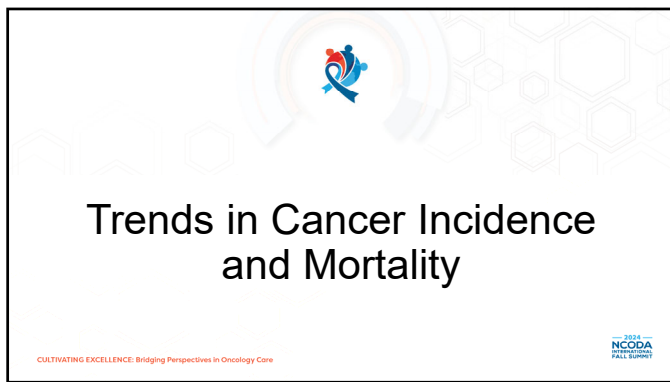
8



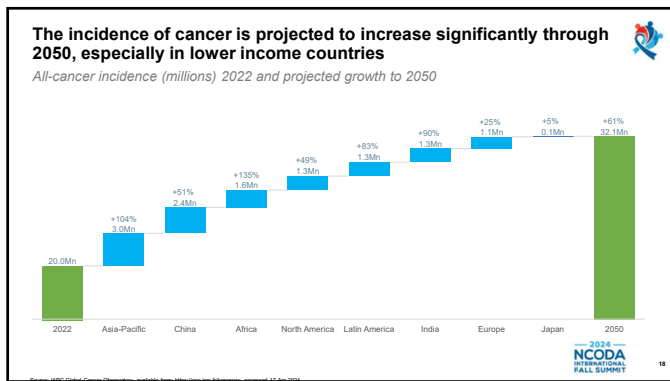
9



16



17



18

QUESTION 1

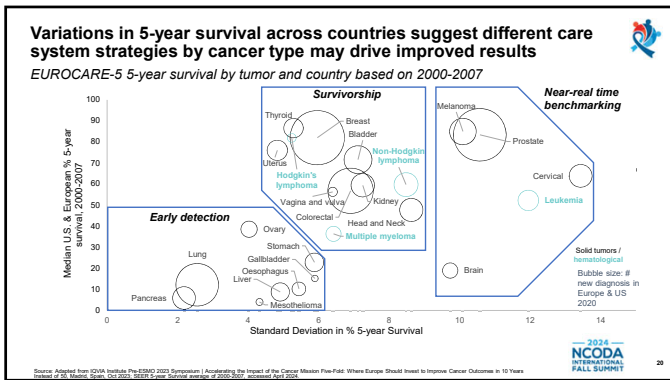
Over the next quarter-century, cancer incidence is set to **decrease** by more than 12 million new cases each year.

a. True
b. False

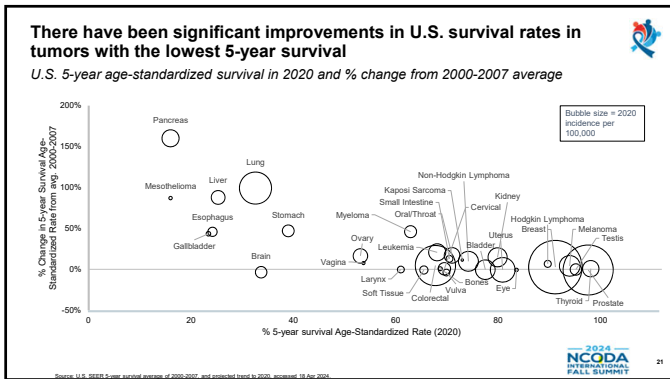
CULTIVATING EXCELLENCE: Bridging Perspectives in Oncology Care

2024 NCODA INTERNATIONAL FALL SUMMIT

19



20



21

QUESTION 2

There have been significant improvements in U.S. survival rates in tumors with the lowest survival, though survival remains low for many of these tumors.

a. True
b. False

CULTIVATING EXCELLENCE: Bridging Perspectives in Oncology Care

2024 NCODA INTERNATIONAL FALL SUMMIT

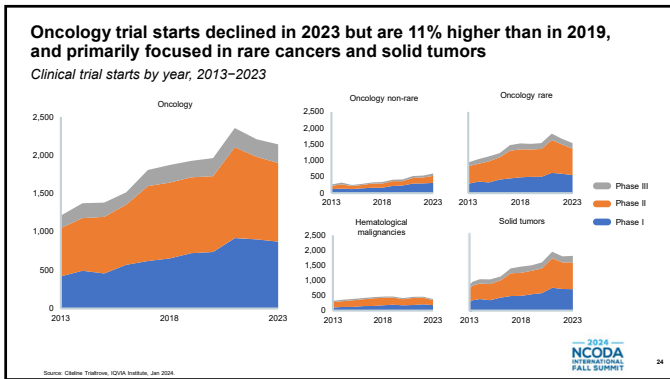
22

Oncology Research and Development Activities

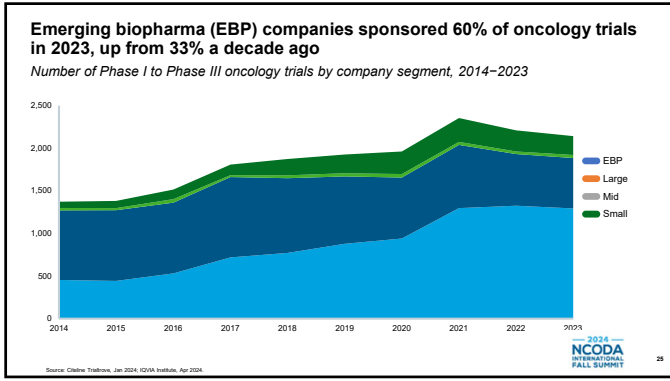
CULTIVATING EXCELLENCE: Bridging Perspectives in Oncology Care

2024 NCODA INTERNATIONAL FALL SUMMIT

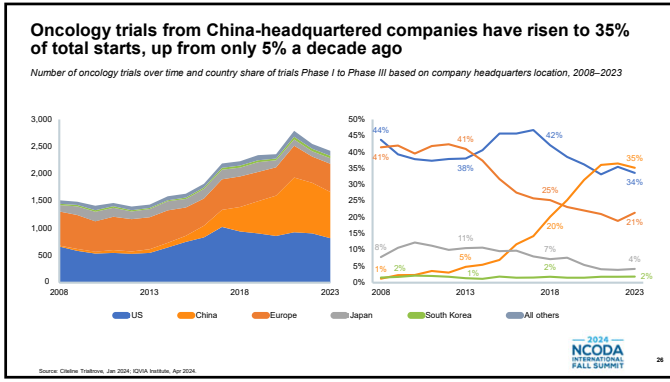
23



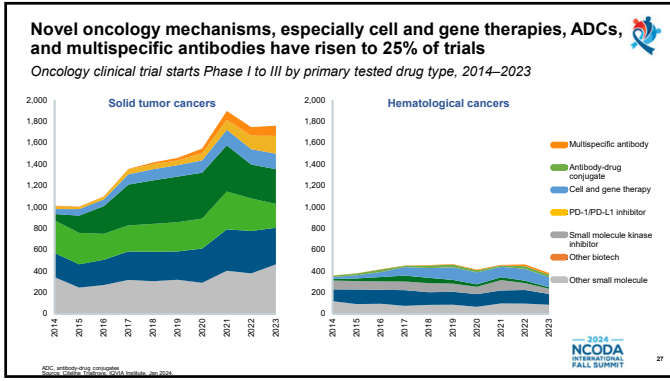
24



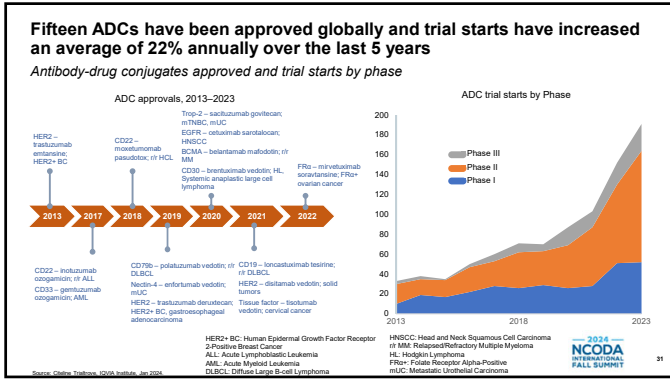
25



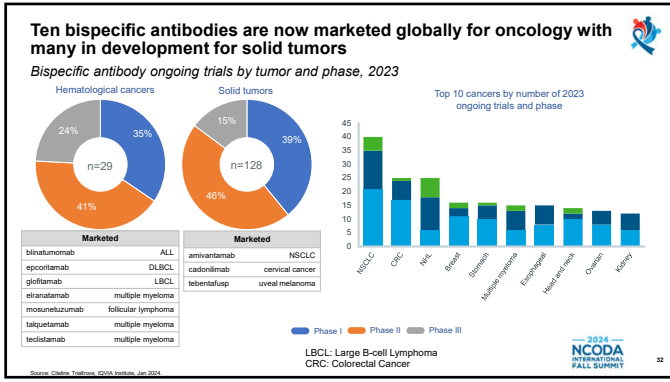
26



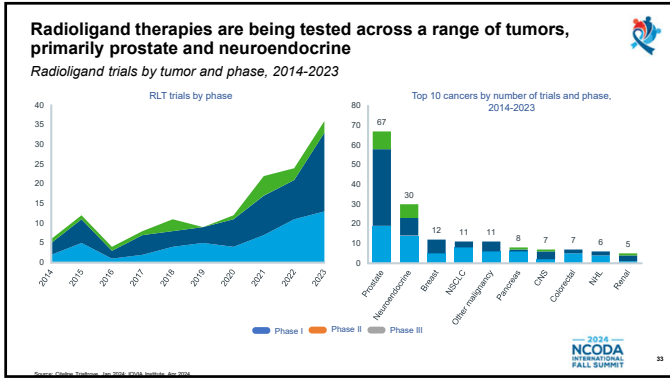
27



31



32



33

Regulators and industry sponsors are extending boundaries around cancer drug development to speed solutions to patients

Themes in oncology Research & Development (R&D) regulatory science

Earlier lines of therapy

- A generation of breakthrough therapies are emerging as first-line therapies across solid and hematological cancers
- FDA's Project Endpoint and Project Frontrunner are both key to the agency's efforts to refine understanding, assessment, and use of endpoints in cancer research and shift those endpoints into earlier LoT

Novel combinations to target drug resistance

- As novel modalities shift into earlier LoT, increasing numbers of patients will be treatment resistant to the mechanisms and targets already used
- Creative combinations will be required to provide patients with therapy options with durable response

Evolving technology for biomarker sample collection

- Biomarker testing is evolving rapidly with ctDNA (liquid biopsies) gaining wider adoption and improved accuracy
- Fecal, urine and saliva sample types may expand minimally-invasive sample collection approaches and enable more remote and virtual trial designs

Minimum therapeutic dose in trials

- Historic focus on efficacy with higher doses during trials is thought to have resulted in higher toxicity and missed opportunities for some patients to have received beneficial therapies for an extended duration
- FDA's Project Optimus aims for manufacturers to establish optimal doses before progressing to registration trials

LoT: Line of Therapy

2024 NCODA INTERNATIONAL FALL SUMMIT 34

34

Evidence of the potential for AI has increased as research candidates advance into clinical development

Impact of artificial intelligence (AI) on industry clinical development pipeline

Research stage

Drug discovery → **Translational/Trial planning**

AI /ML role

- Target ID** - optimize for therapeutic potential
- Drug design** - target affinity and drugability
- Precision medicine** - defining optimal patient profile, multi-omic approaches
- Clinical simulations** - safety, efficacy modeling for trial design

Clinical development benefit

- Target and drug optimization reduces PK/PD, safety, and efficacy risk
- Productivity = Success / Complexity x Duration
- Acceleration due to patient selectivity and trial start/entry/progress optimization
- Reduced complexity with patient and endpoint focus

PK/PD: Pharmacokinetics/Pharmacodynamics
ML: Machine Learning

Oncology AI/ML role type in pipeline products with known AI platform use in research stage (2019-2023)

AI/ML Role Type	Number of Products
AI Used	24
Drug design	19
Target ID	16
Precision medicine	8
Trial	1

Source: Oncology.gov, ClinicalTrials.gov, IQVIA Institute, April 2024

2024 NCODA INTERNATIONAL FALL SUMMIT 35

35

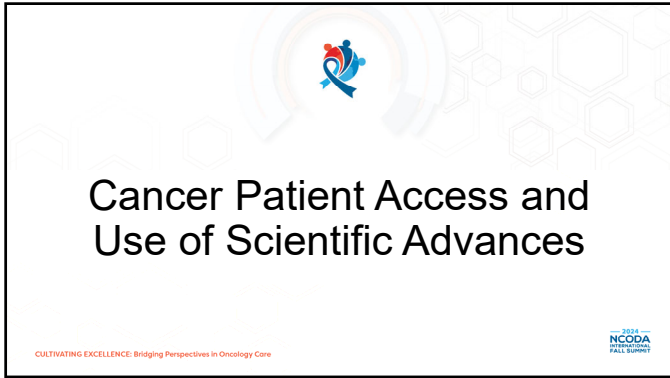
QUESTION 3

More than _____ trials testing CAR T-cell therapies in oncology started in 2023 with a growing number across solid tumors.

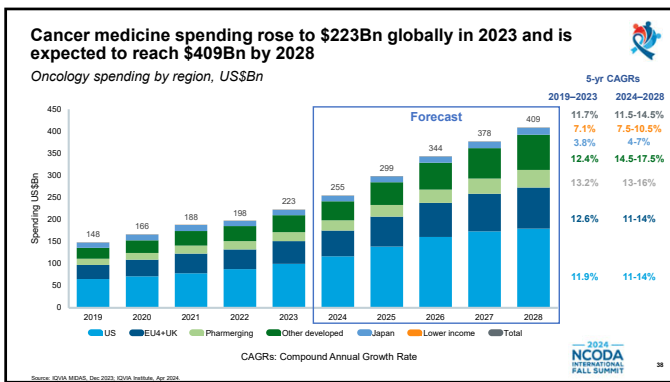
- 20
- 150
- 250
- 300

2024 NCODA INTERNATIONAL FALL SUMMIT

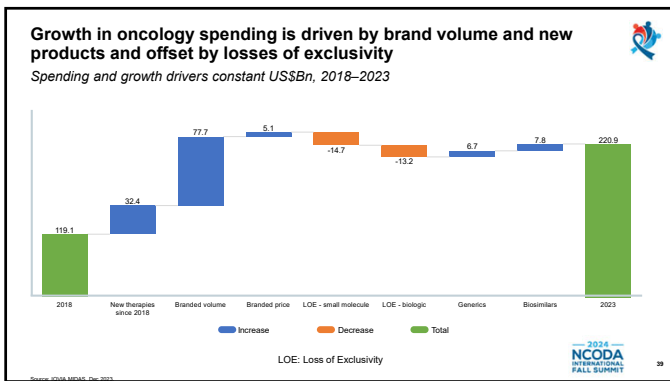
36



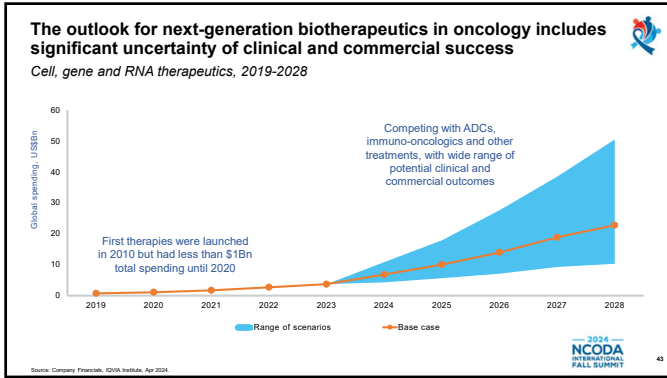
37



38



39



43

QUESTION 4

Six of the top 10 tumors have double-digit spending growth, and all areas have significant numbers of breakthrough new medicines.

a. True
 b. False

CULTIVATING EXCELLENCE: Bridging Perspectives in Oncology Care

2024 NCODA INTERNATIONAL FALL SUMMIT

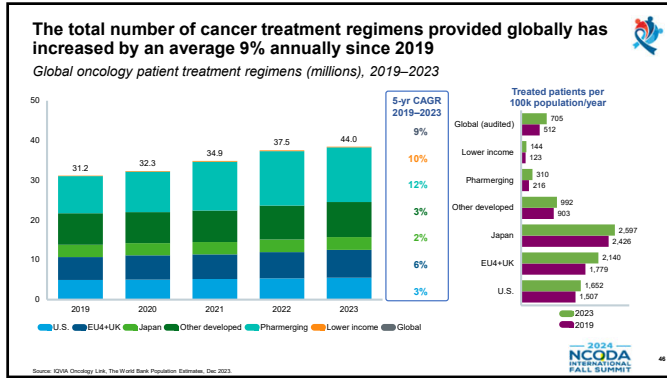
44

Spending on Oncology Medicines

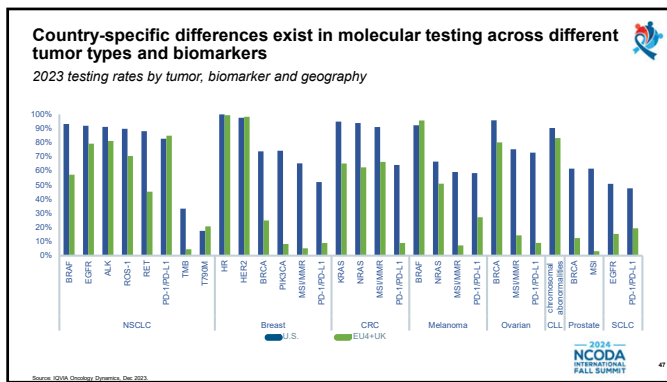
CULTIVATING EXCELLENCE: Bridging Perspectives in Oncology Care

2024 NCODA INTERNATIONAL FALL SUMMIT

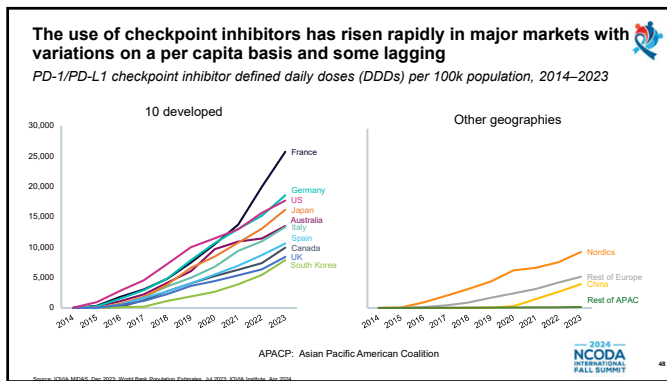
45



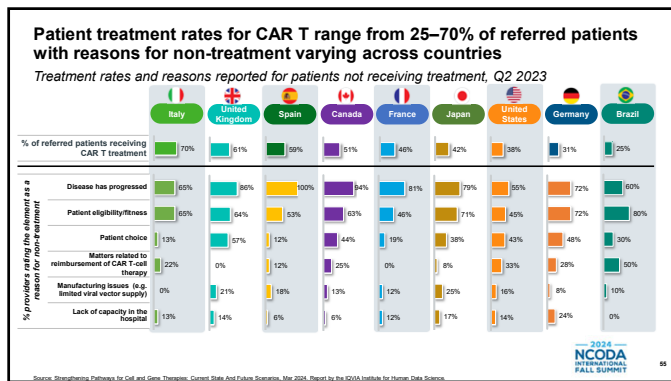
46



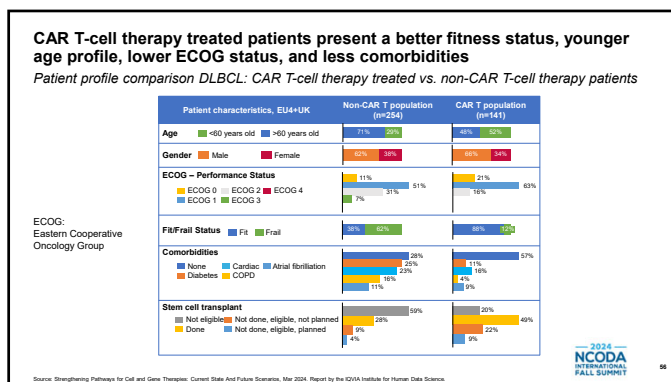
47



48



55



56

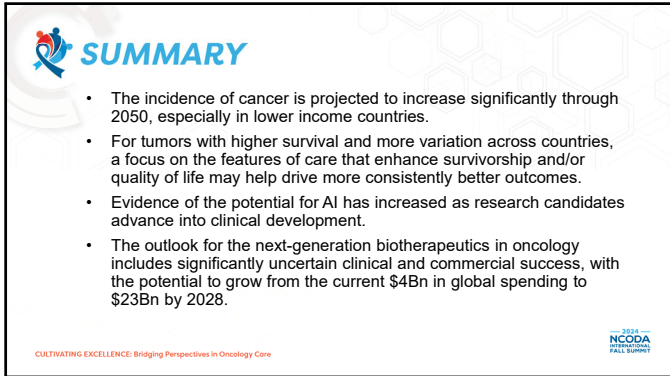
QUESTION 5

Oncology biosimilar uptake has been greater than _____% across major markets, and biosimilars saved \$7.1Bn in 2023 and \$19Bn since 2017.

- 50%
- 25%
- 15%

CULTIVATING EXCELLENCE: Bridging Perspectives in Oncology Care

57



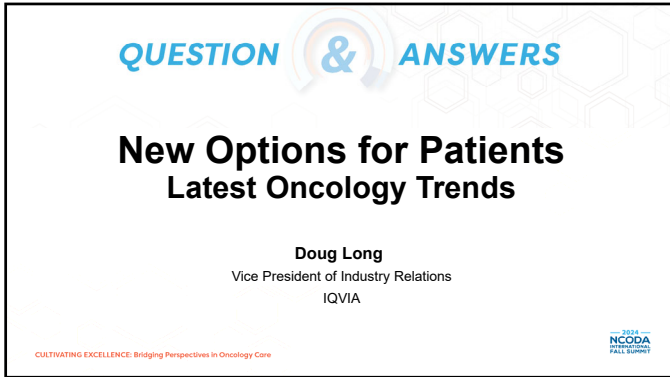
SUMMARY

- The incidence of cancer is projected to increase significantly through 2050, especially in lower income countries.
- For tumors with higher survival and more variation across countries, a focus on the features of care that enhance survivorship and/or quality of life may help drive more consistently better outcomes.
- Evidence of the potential for AI has increased as research candidates advance into clinical development.
- The outlook for the next-generation biotherapeutics in oncology includes significantly uncertain clinical and commercial success, with the potential to grow from the current \$4Bn in global spending to \$23Bn by 2028.

CULTIVATING EXCELLENCE: Bridging Perspectives in Oncology Care

2024 NCODA PATIENTS FALL SUMMIT

58



QUESTION & ANSWERS

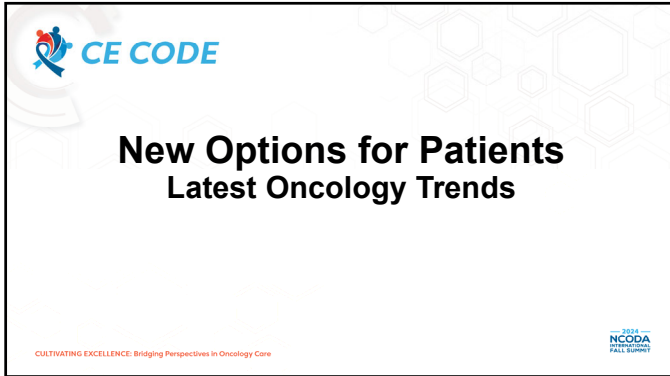
New Options for Patients Latest Oncology Trends

Doug Long
Vice President of Industry Relations
IQVIA

CULTIVATING EXCELLENCE: Bridging Perspectives in Oncology Care

2024 NCODA PATIENTS FALL SUMMIT

59



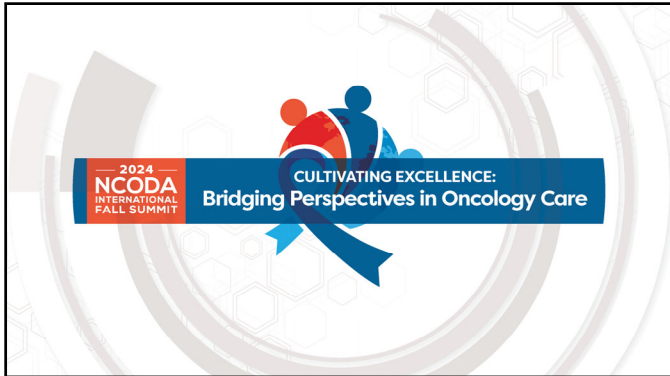
CE CODE

New Options for Patients Latest Oncology Trends

CULTIVATING EXCELLENCE: Bridging Perspectives in Oncology Care

2024 NCODA PATIENTS FALL SUMMIT

60



61