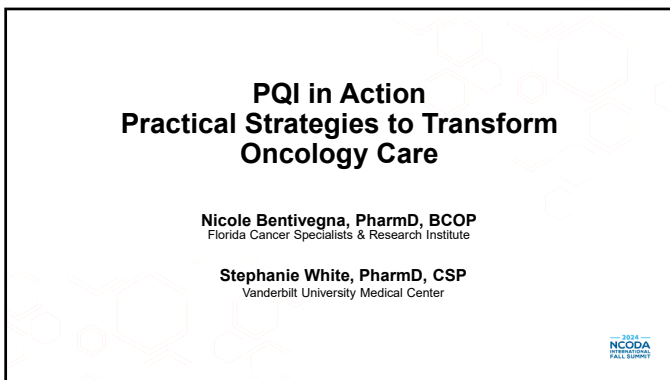
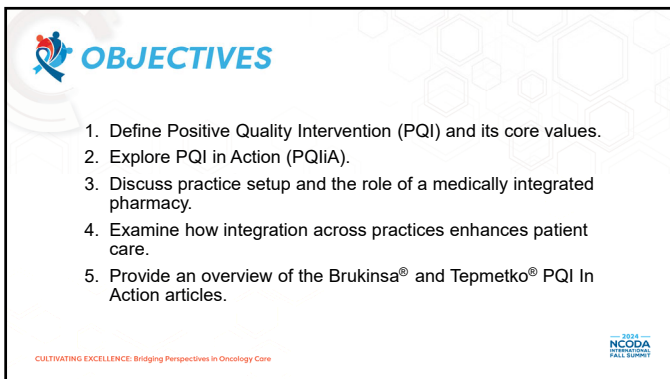




1



2



3

What is a PQI?

Positive Quality Intervention (PQI): a precise and concise peer-reviewed clinical guidance resource.

What is a PQI?

Clinical guidance documents which provide concise, precise, and step by step guidance on:

- 1) Oral and IV Oncolytics
- 2) Supportive Care
- 3) Disease State Management

Sections

- Description
- Background
- PQI Process
- Patient Centered Activities
- References

CULTIVATING EXCELLENCE: Bridging Perspectives in Oncology Care

2024 NCODA PATIENT-CENTERED FALL SUMMIT

4

The PQI in Action

- Explores how the Medically-Integrated oncology teams at practice sites utilize PQIs
- Emphasizes the significance of a collaborative, team-based approach to cancer care
- Walks through the PQI and demonstrates best practices for patient management

PQI IN ACTION

ZANBRUTINIB (BRUKINSA)[®]
PATIENT SELECTION AND MANAGEMENT PQI

CULTIVATING EXCELLENCE: Bridging Perspectives in Oncology Care

2024 NCODA PATIENT-CENTERED FALL SUMMIT

5

Benefits of Medically Integrated Pharmacy

"Health record access is one of the biggest benefits of medically-integrated pharmacies –being able to look at that providers note, being able to look at that clinical pharmacist colleagues note to see what she has already addressed"

— Matthew Smith, PharmD, CSP

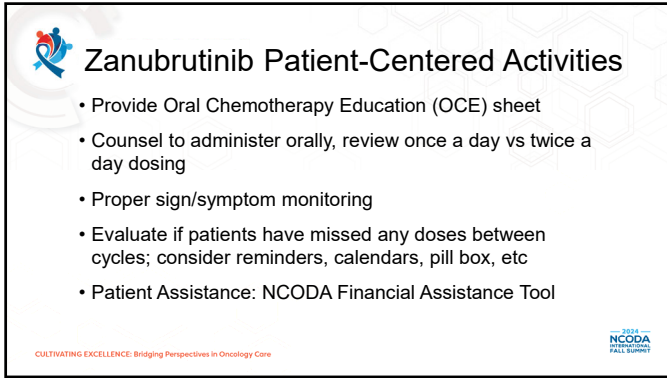
Figure 2: Benefits in Using MIP

- Convenience
- Better control of timing of refills
- Contributes to personalized and optimized treatment plans
- Information about copay assistance programs or grants
- Extra communication and medication counseling with the patient
- Waste reduction
- Avoiding treatment delays with new prescriptions
- Access to EMR for full insights on patient's medical history
- Collaborative communication for education and side effect management by pharmacists

CULTIVATING EXCELLENCE: Bridging Perspectives in Oncology Care

2024 NCODA PATIENT-CENTERED FALL SUMMIT

6



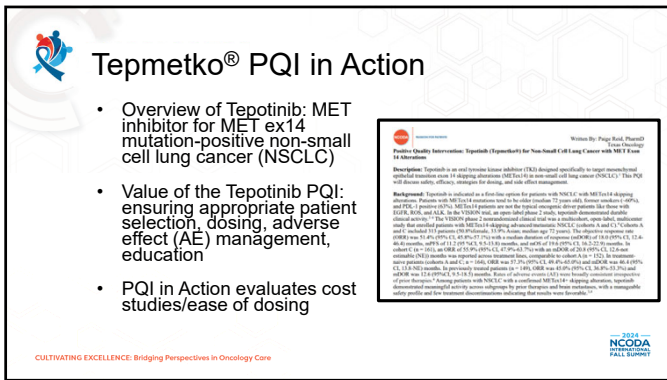
Zanubrutinib Patient-Centered Activities

- Provide Oral Chemotherapy Education (OCE) sheet
- Counsel to administer orally, review once a day vs twice a day dosing
- Proper sign/symptom monitoring
- Evaluate if patients have missed any doses between cycles; consider reminders, calendars, pill box, etc
- Patient Assistance: NCODA Financial Assistance Tool

CULTIVATING EXCELLENCE: Bridging Perspectives in Oncology Care

2024 NCODA FALL SUMMIT

10



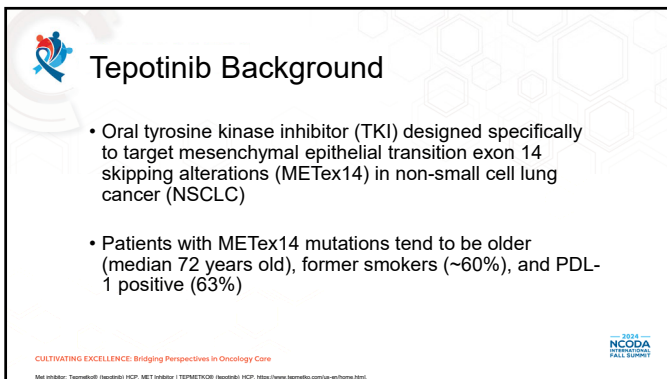
Tepmetko® PQI in Action

- Overview of Tepotinib: MET inhibitor for MET ex14 mutation-positive non-small cell lung cancer (NSCLC)
- Value of the Tepotinib PQI: ensuring appropriate patient selection, dosing, adverse effect (AE) management, education
- PQI in Action evaluates cost studies/ease of dosing

CULTIVATING EXCELLENCE: Bridging Perspectives in Oncology Care

2024 NCODA FALL SUMMIT

11



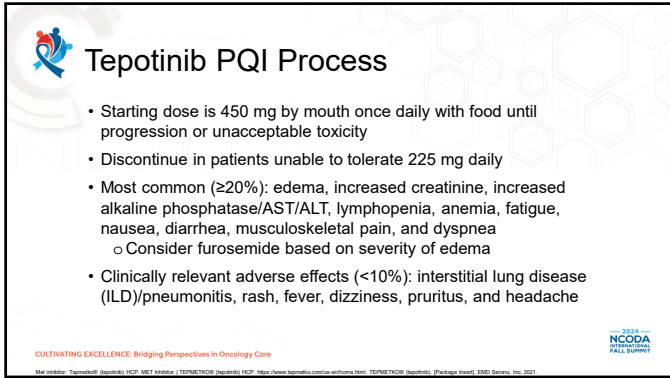
Tepotinib Background

- Oral tyrosine kinase inhibitor (TKI) designed specifically to target mesenchymal epithelial transition exon 14 skipping alterations (METex14) in non-small cell lung cancer (NSCLC)
- Patients with METex14 mutations tend to be older (median 72 years old), former smokers (~60%), and PDL-1 positive (63%)

CULTIVATING EXCELLENCE: Bridging Perspectives in Oncology Care

2024 NCODA FALL SUMMIT

12



Tepotinib PQI Process

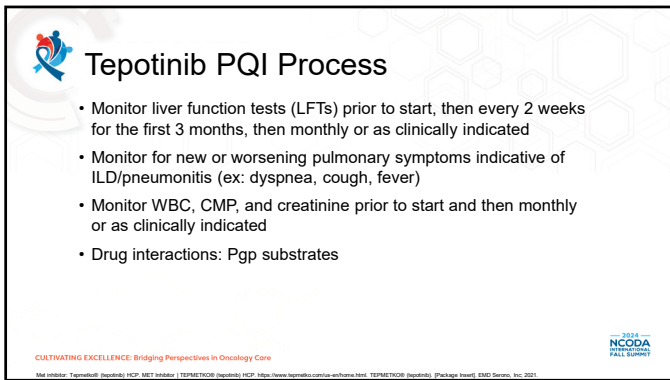
- Starting dose is 450 mg by mouth once daily with food until progression or unacceptable toxicity
- Discontinue in patients unable to tolerate 225 mg daily
- Most common (≥20%): edema, increased creatinine, increased alkaline phosphatase/AST/ALT, lymphopenia, anemia, fatigue, nausea, diarrhea, musculoskeletal pain, and dyspnea
 - Consider furosemide based on severity of edema
- Clinically relevant adverse effects (<10%): interstitial lung disease (ILD)/pneumonitis, rash, fever, dizziness, pruritus, and headache

CULTIVATING EXCELLENCE: Bridging Perspectives in Oncology Care

Metastatic: Tepotinib (tepotinib) HCP, MET Inhibitor | TEPMETICOR (tepotinib) HCP, <https://www.tepotinib.com/us/en/home.html> | TEPMETICOR (tepotinib) (Package Insert), EMD Serono, Inc. 2021

2024 NCODA Fall Summit

13



Tepotinib PQI Process

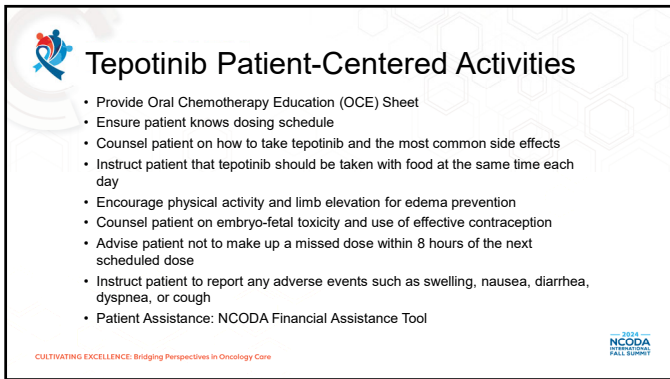
- Monitor liver function tests (LFTs) prior to start, then every 2 weeks for the first 3 months, then monthly or as clinically indicated
- Monitor for new or worsening pulmonary symptoms indicative of ILD/pneumonitis (ex: dyspnea, cough, fever)
- Monitor WBC, CMP, and creatinine prior to start and then monthly or as clinically indicated
- Drug interactions: Pgp substrates

CULTIVATING EXCELLENCE: Bridging Perspectives in Oncology Care

Metastatic: Tepotinib (tepotinib) HCP, MET Inhibitor | TEPMETICOR (tepotinib) HCP, <https://www.tepotinib.com/us/en/home.html> | TEPMETICOR (tepotinib) (Package Insert), EMD Serono, Inc. 2021

2024 NCODA Fall Summit

14



Tepotinib Patient-Centered Activities


- Provide Oral Chemotherapy Education (OCE) Sheet
- Ensure patient knows dosing schedule
- Counsel patient on how to take tepotinib and the most common side effects
- Instruct patient that tepotinib should be taken with food at the same time each day
- Encourage physical activity and limb elevation for edema prevention
- Counsel patient on embryo-fetal toxicity and use of effective contraception
- Advise patient not to make up a missed dose within 8 hours of the next scheduled dose
- Instruct patient to report any adverse events such as swelling, nausea, diarrhea, dyspnea, or cough
- Patient Assistance: NCODA Financial Assistance Tool

CULTIVATING EXCELLENCE: Bridging Perspectives in Oncology Care

Metastatic: Tepotinib (tepotinib) HCP, MET Inhibitor | TEPMETICOR (tepotinib) HCP, <https://www.tepotinib.com/us/en/home.html> | TEPMETICOR (tepotinib) (Package Insert), EMD Serono, Inc. 2021

2024 NCODA Fall Summit


15



Bringing It All Together: The Value of PQIs and Collaborative Care

- Common themes among PQIs: improving outcomes, streamlining processes, ensuring safety, and enhancing patient care
- The essential role of a multidisciplinary care team in ensuring the success of a PQI with physicians, pharmacists, nurses, advanced practice providers, pharmacy technicians, and other support staff
- PQIs help the care team stay current with evolving oncology treatments, helpful for providers and patients.

CULTIVATING EXCELLENCE: Bridging Perspectives in Oncology Care



16


QUESTION & ANSWERS

**PQI in Action
Practical Strategies to Transform
Oncology Care**


Nicole Bentivegna, PharmD, BCOP
Florida Cancer Specialists & Research Institute

Stephanie White, PharmD, CSP
Vanderbilt University Medical Center

CULTIVATING EXCELLENCE: Bridging Perspectives in Oncology Care



17



**CULTIVATING EXCELLENCE:
Bridging Perspectives in Oncology Care**

18
