




1

Championing Patient Care:
Highlighting the Varied Roles of Nurses in Oral Anticancer Therapy


Elizabeth Bettencourt, MSN, RN, OCN
Oral Oncolytic Nurse Navigator
Sutter Health

Brittni Dissen, BSN, RN, OCN
Oral Oncolytic Nurse Navigator
Lake Regional Health System

Dana Slusher, BSN, RN, OCN
Oral Oncolytic Nurse Navigator
Norton Cancer Institute




2


 **OBJECTIVES**

1. Identify touchpoints to track for managing patients taking oral anticancer medication (OAM).
2. Compare funding resources available for patients based on their prescription insurance coverage.
3. Describe resources to help nurses and the medically integrated team care for patients taking OAM.

CULTIVATING EXCELLENCE: Bridging Perspectives in Oncology Care



3

 **DISCLOSURE**


No relevant financial relationships from the past 24 months have been identified for the following faculty and planners of this CE activity:

- Elizabeth Bettencourt, MSN, RN, OCN
- Brittni Dissen, BSN, RN, OCN
- Dana Slusher, BSN, RN, OCN
- Mary Anderson, BSN, RN, OCN
- Daisy Doan, PharmD

CULTIVATING EXCELLENCE: Bridging Perspectives in Oncology Care

2024 NCODA Fall Summit

4

 **Multiple Touchpoints Require Multidisciplinary Collaboration**


Pre-start	During Treatment	After Treatment
<ul style="list-style-type: none">• Ordering & Prescribing• REMS Enrollment• Signatures & ICD codes• Adherence Barriers Assessment• Education & Counseling• Informed Consent• Prior Authorizations• Denials & Appeals• Financial Assistance• Limited Distribution• PBM Pharmacy Restrictions• Delivery	<ul style="list-style-type: none">• Proactive Outreach• Start Date Documentation• Laboratory Monitoring• Toxicity Assessments• Adherence Assessments• Concurrent Therapy Appointments• Refills• Insurance changes• Grant renewals	<ul style="list-style-type: none">• Treatment Plan Discontinuation• Prescription d/c• Pharmacy Notification• Proper Disposal• Transitions of Care• Survivorship

CULTIVATING EXCELLENCE: Bridging Perspectives in Oncology Care

Assessment of a Service in Oncology Writing: 2021-2022

2024 NCODA Fall Summit

5

 **QUESTION 1**

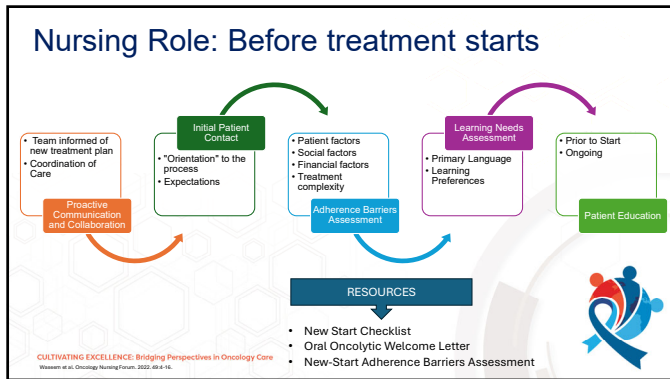
Who "owns" the OAM Process at your facility?

- a) OAM Navigator
- b) Clinic Nursing staff
- c) Pharmacist
- d) Provider: APRN / Physician
- e) No-one

CULTIVATING EXCELLENCE: Bridging Perspectives in Oncology Care

2024 NCODA Fall Summit

6



7

QUESTION 2

When is an adherence barriers assessment completed in your practice?

- a) At time of initial treatment planning and ordering
- b) During new-start education session
- c) This is not routinely done at my practice

CULTIVATING EXCELLENCE: Bridging Perspectives In Oncology Care
NCODA NATIONAL ONCOLOGY CARE DELIVERY ASSOCIATION

8

The Pre-Start Adherence Barriers Assessment

Difficulty swallowing pills?	Frequently forget to take your current medications?	Skip doses to make your meds last longer?
Difficulty opening pill bottles or packaging?	Caregiver or support person available to help?	Reliable address for safe delivery of your meds?
Access to reliable transportation for all appointments?	Access to a phone and internet?	Difficulty paying for your current medications?

CULTIVATING EXCELLENCE: Bridging Perspectives In Oncology Care
Baltzer et al. Oncology Nursing Forum. 2022;49(6):279-295.

9

Championing Patient Care: Highlighting the Varied Roles of Nurses in Oral Anticancer Therapy

NCODA NURSING COMMUNITY

New-Start Adherence Barriers Assessment & Intervention Documentation Template

Purpose:

- This document serves as a template for Oncology practices and Nurses to identify potential barriers to each patient's adherence before initiating oral therapy.
- Interventions options for each barrier domain can be selected for documentation purposes.
- Template may be downloaded, edited, and used for building assessment into practice's EHR system.

EMR Review:

Purpose: To obtain patient-specific information prior to interviewing patient to assess for potential barriers to adherence.

- Physical Address
 - Medication delivery options
 - Multiple Address (Summer/ Winter homes)
 - See Interview question for suitability for medication delivery
 - Phone number confirmed (paperwork/ EMR)
 - Primary/secondary Language
 - Need for translator
 - Pre-existing conditions
 - Medication list
 - Allergies
 - Multiple Oncology Providers
 - PHV Release: Presence of support person/Emergency contact
 - PCA
 - Insurance Coverage: Prescription Drug Coverage

Are you ever stopped taking your medication because you felt worse or weren't you felt better?
 No
 Yes. document interventions taken

Is a caregiver/support person available to help you with taking your medication if needed?
 No
 Yes. document interventions taken

Document this individual's preference: Document this individual's preference before starting medication
 Don't give oral antineoplastic
 Other

Document this individual's preference: Don't give a number product
 Don't take tablet/capsule
 Documentations for local
 Documentations for regional

Interventions taken: Pharmacy notified
 Arrangement made for patient to pick up the medication at local pharmacy
 Medication was sent by long distance carrier
 Other

Interventions taken to help you: Contacted help of family/support person
 Social Work advised support
 Documentations received (NCC) provided
 Options for transport/ Bloodwork if necessary
 Other

Interventions taken to see a phone and: Arranged help of family/support person
 Pharmacy notified
 Arranged medication delivery documentation
 Other

Interventions: Financial assistance request
 Referral to social work
 Documentations received (NCC) provided
 Other

2024 NCODA Fall Summit

10

Patient Education

RESOURCES

- OralChemoDSheets.com
- NCODA PQI
- Plan of Care Treatment Guide
- NCODA Treatment Support Kits

CULTIVATING EXCELLENCE: Bridging Perspectives in Oncology Care

11

Pharmacy has the Rx: Now what?

Benefits Investigation, Rx Verification, Determine dispensing pharmacy, Determining Out of Pocket \$, Financial Assistance, Pharmacist Counseling, Dispense

CULTIVATING EXCELLENCE: Bridging Perspectives in Oncology Care

12

Medicare D and the Inflation Reduction Act

	2023	2024	2025
DEDUCTIBLE	PATIENT: 100%	PATIENT: 100%	PATIENT: 100%
INITIAL COVERAGE	PATIENT: 25%	PATIENT: 25%	PATIENT: 25%
	PART D: 75%	PART D: 75%	PART D: 65%
			MANUFACTURER 10%
COVERAGE GAP (DONUT HOLE)	PATIENT 25%	PATIENT 25 %	ELIMINATED
	MANUFACTURER 70%	MANUFACTURER 70%	
	MEDICARE 5%	MEDICARE 5%	
CATASTROPHIC PHASE	PATIENT 5%	PATIENT 0%	PATIENT 0%
OUT OF POCKET CAP	\$3,100	\$3,250	\$2,000

CULTIVATING EXCELLENCE: Bridging Perspectives in Oncology Care
Material excerpted from www.onc.gov/irca-reduction-act-and-medicare-part-d-improvements

13

Financial Assistance 101

Voucher

- First fill at the specialty pharmacy
- All patients can use this option
- Limitations – Availability

Samples

- Provided by the manufacturer
- All patients can use this option
- Limitations – Availability; Provider - Drug Representative connection; Clinic permitted to store samples

Co-pay Card

- Only commercially insured patients
- Limitations – Co-pay maximizers/accumulator programs

Foundation Grant

- Most only for Medicare patients
- Limitations – Limited funding, Patient over income limits
- Tip – Check for local programs that offer grants for oncology patients

Manufacturer Patient Assistance Program

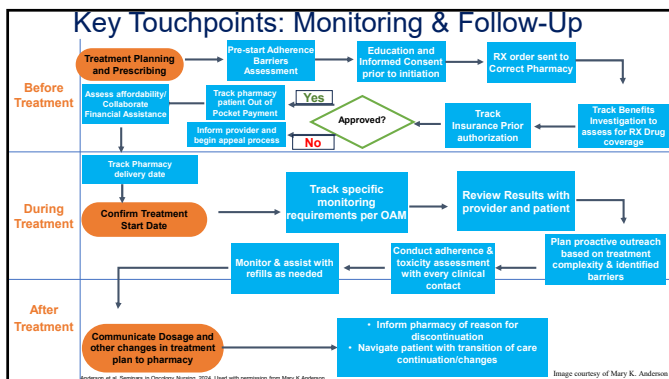
- Often only for Medicare or underinsured patients
- Limitations – Commercial plans that do not include specialty medications; Patient over income limits

Miscellaneous options

- Rx Coupons
 - Limitation: few anticancer medications available
- Pharmacy and Specialty Pharmacy Programs
 - Limitations: Not all pharmacies have this option; PBM pharmacy restrictions

CULTIVATING EXCELLENCE: Bridging Perspectives in Oncology Care

14



15

The Impact of the Oral Oncolytic Nurse Navigator

- ✓ Proactive Tracking
- ✓ Proactive Communication
- ✓ Care Coordination
- ✓ Documentation
- ✓ Patient Safety
- ✓ Patient Satisfaction
- ✓ Reduced time to treatment
- ✓ Reduced Adverse Events
- ✓ Health System Savings
- ✓ Cost Reductions
- ✓ Accreditation Standards
- ✓ Clinical Education
- ✓ Process Development
- ✓ Quality Audits

Anderson et al. Oncology Nurse 2017;32(1):24-30; Anderson et al. Seminars in Oncology Nursing 2014; 4(2); Barkett et al. Clinical Journal of Oncology Nursing 2012; 26(1):6-10; Hinman, C. Oncology Today 2019; 10(1); Matthews et al. Oncology Nursing 2014; 10(1):108-110; Barkett et al. Clinical Journal of Oncology Nursing 2012; 26(1):6-10.

16

Obtaining Buy In: Supporting Articles

- "Defining the Role and Responsibilities of the Oral Anticancer Medication Nurse Navigator" by Anderson, Bettencourt, LeFebvre
- "The Role of the Oral Oncology Nurse Navigator" by Anderson, et al.
- "Implementation of an Oral Antineoplastic Therapy Program: Results From a Pilot Project" by Barkett, et al.
- "Looking to the Future: The Role of the Nurse in Oral Oncolytic Monitoring" by Hinman
- "Essentials of Oral Oncolytics: Developing a Nursing Reference" by Matthews, Caprera
- "The Need for a Nursing Presence in Oral Chemotherapy" by Yagasaki, Komatsu

CULTIVATING EXCELLENCE: Bridging Perspectives in Oncology Care

17

Resources

NCODA

Nursing Community Resources:

- Oral Oncolytic Welcome Letter
- Plan of Care Treatment Guide
- Adherence Barriers Assessment
- New Start Checklist
- Tracking Sheets
- Documentation Templates

Other NCODA Resources:

- PQI
- Treatment Support Kits
- Webinars
- PQI Podcast

Other Resources

- Oncology Nursing Society (ONS):
 - o ONS Oral Anticancer Medication Toolkit
 - o ONS Podcast
 - o ONS Drug reference sheets
- ASCO/ONS Antineoplastic Therapy Administration Safety Standards (2024)
- Oralchemoedsheets.com
- Ivcanceredsheets.com
- Supplemental side effect library
- MASCC Oral Agent Teaching Tool
- ChemoExperts Treatment Tracker
- NCCN guidelines

CULTIVATING EXCELLENCE: Bridging Perspectives in Oncology Care

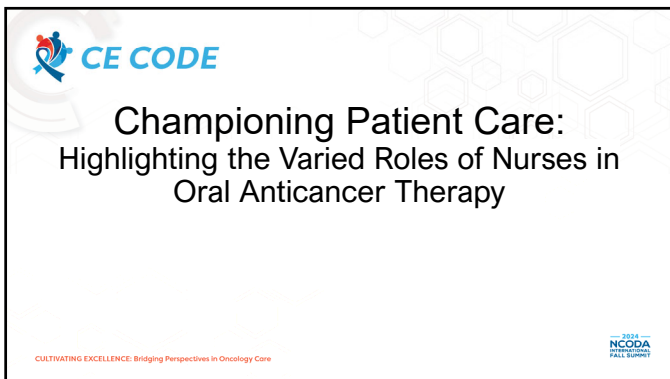
18



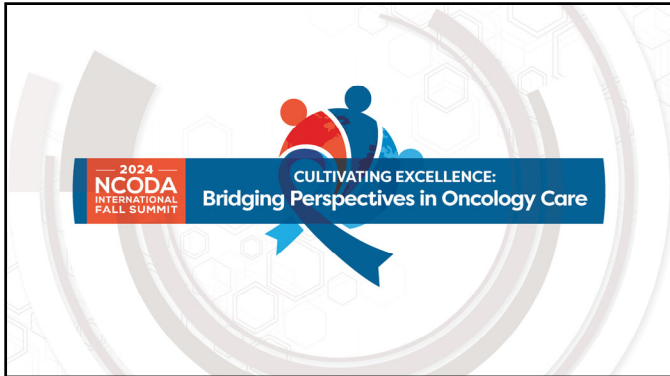
19



20



21



22