

CMS STAR MEDICATION ADHERENCE OVERVIEW



PASSION FOR PATIENTS



-Vonda McClendon, RCphT

BACKGROUND

- The STAR program was developed in 2008 by the Centers for Medicare & Medicaid to ensure a high quality of cost and coverage from Medicare/Medicaid PBM's.
- CMS doesn't directly assign STAR ratings; these are usually issued by the health plans.
- Adherence measurements are used to determine qualification as a preferred network and other performance contracting programs.

THRESHOLD

Patients are considered adherent if they have a percentage of days covered (PDC) of 80% or higher.

ADHERENT vs NON-ADHERENT

MIPs face unique a challenge with adherence to STAR medication adherence. CMS guidelines does not recognize chronic condition oversight vs chemotherapy induced conditions. This can result in the appearance of non-adherence and DIR fees. Ex: A patient develops chemo-induced diabetes treated with Metformin, but later changes treatment and discontinues the Metformin. This has the appearance of non-adherence in accordance with the existing STAR measures and may result in DIR fees for your practice.

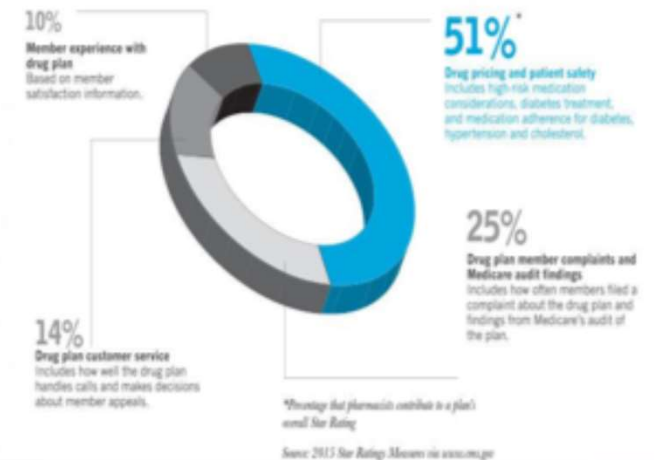
PURPOSE

Adherence to prescribe medications is crucial in achieving positive outcomes for therapeutic regimens involving drug therapy. Common chronic disease states associated with negative outcomes or requiring integrated and multifaceted approaches can be primary targets for interventions.¹

STAR MEDICATION CATEGORIES

The Centers for Medicare & Medicaid Services (CMS) incorporated 3 adherence measures for diabetes medications (noninsulin diabetes medications), including Weygovy and Ozempic; hypertension medications (renin-angiotensin-system antagonists), and cholesterol medications (statins) in the Part D ratings.

Breakdown of a plan's Star Rating:



SUMMARY

In oncology care, monitoring adherence gives MIPs an opportunity to increased patient interaction and address identified oncology care issues, including medication cost, side effects, and lack of perceived benefits. Oncology practices work to navigate STAR adherence challenges while striving to meet CMS patient adherence guidelines.

Infographic: Star Ratings and What They Mean for Independent Pharmacies by Elements magazine | pbahealth.com
<https://www.ncbi.nlm.nih.gov/pmc/articles/PMC10390912/#:~:text=Thus%2C%20the%20Centers%20for%20Medicare,the%20Part%20D%20star%20ratings>
<https://www.healthaffairs.org/content/forefront/why-medicare-star-medication-adherence-measures-must-go#:~:text=Patients%20are%20considered%20adherent%20at%20scale%20from%201%20to%205>